
185/000
Stenski prehodni lok N navoj / Ž/Ž spoj 90°

Wall plate elbow 90° FF

Deckenwinkel 90° I/I

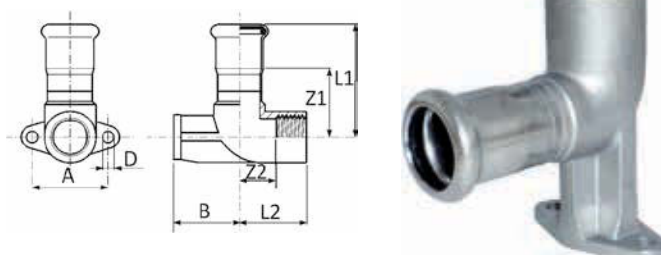
Equerre 90° FF

Codo Placa HH

Material: AISI 316L – 1.4404

 O-ring: EPDM črn - black - Schwarz - noir - negro
 EN 10226-1 (ex ISO 7/1)

ŠIFRA CODE	De x Rp mm x inch	L1 mm	L2 mm	Z1 mm	Z2 mm	A mm	B mm	D mm			
185102015	15 x 1/2"	50	30	30	17	34	13	5	98	10	200
185102018	18 x 1/2"	51	30	31	17	34	13	5	109	10	200
185304022	22 x 3/4"	55	34	34	19	40	17	6	166	10	100


185/001
Podaljšan stenski prehodni lok N navoj / Ž/Ž spoj 90°

Extension wall plate elbow 90° FF

Deckenwinkel 90°/W - I/I

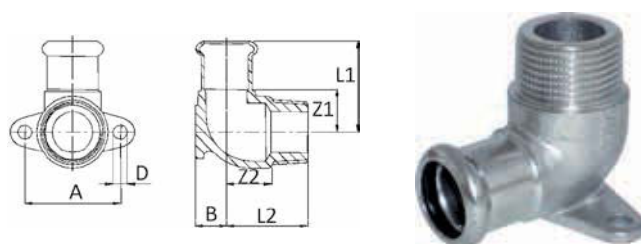
Equerre 90° FF avec support d'avancement

Codo placa HH con espaciador

Material: AISI 316L – 1.4404

 O-ring: EPDM črn - black - Schwarz - noir - negro
 EN 10226-1 (ex ISO 7/1)

ŠIFRA CODE	De x Rp mm x inch	L1 mm	L2 mm	Z1 mm	Z2 mm	A mm	B mm	D mm			
185102115	15 x 1/2"	50	30	30	17	34	35	5	146	10	150
185102118	18 x 1/2"	51	30	31	17	34	35	5	142	10	150
185304122	22 x 3/4"	55	34	34	19	40	31	6	182	10	100


185/002
Stenski prehodni lok Z navoj / Ž/M spoj 90°

Wall plate elbow 90° FM

Deckenwinkel 90° I/A

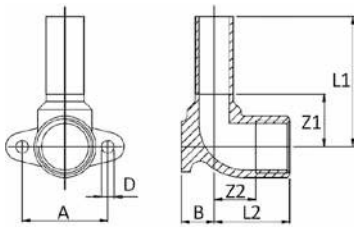
Equerre 90° MF

Codo placa HM

Material: AISI 316L – 1.4404

 O-ring: EPDM črn - black - Schwarz - noir - negro
 EN 10226-1 (ex ISO 7/1)

ŠIFRA CODE	De x R mm x inch	L1 mm	L2 mm	Z1 mm	Z2 mm	A mm	B mm	D mm			
185304218	18 x 3/4"	38	34	18	19	40	13	6	160	10	100



185/000 M

Stenski prehodni lok 90° M/Ž

Wall plate elbow 90° MF

Deckenwinkel 90° A/I Equerre

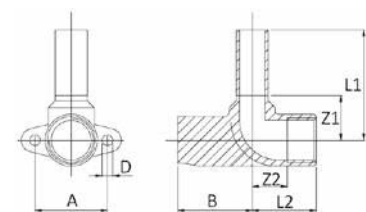
90° MF

Codo Placa MH

Material: AISI 316L – 1.4404

EN 10226-1 (ex ISO 7/1)

ŠIFRA CODE	De x Rp mm x inch	L1 mm	L2 mm	Z1 mm	Z2 mm	A mm	B mm	D mm			
185102015M	15 x 1/2"	52	30	21	16,5	34	13	5	100	10	200
185102018M	18 x 1/2"	52	30,5	21	17	34	12,5	5	95	10	200
185304022M	22 x 3/4"	55	34	24	19	40	17	6	144	10	100



185/001 M

Podaljšan stenski prehodni lok N navoj / M/Ž spoj 90°

Extension wall plate elbow 90° MF Deckenwinkel 90°/W

A/ I

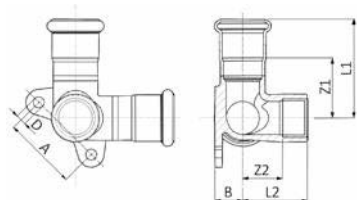
Equerre 90° MF avec support d'avancement Codo Placa

MH con espaciador

Material: AISI 316L – 1.4404

EN 10226-1 (ex ISO 7/1)

ŠIFRA CODE	De x R mm x inch	L1 mm	L2 mm	Z1 mm	Z2 mm	A mm	B mm	D mm			
185102115M	15 x 1/2"	52	30	21	16,5	34	35	5	135	10	150
185102118M	18 x 1/2"	52	30	21	16,5	34	35	5	130	10	150
185304122M	22 x 3/4"	55	34	24	19	40	31	6	166	10	100



185/003

Kotni stenski prehodni lok ženski spoj

Corner tee with wall flange

Inoxpres-Doppelwandscheibe

Equerre murale avec filetage femelle

Racor tres vías con brida y rosca hembra

Material: AISI 316L – 1.4404

O-ring: EPDM črn - black - Schwarz - noir - negro

EN 10226-1 (ex ISO 7/1)

ŠIFRA CODE	De x R mm x inch	L1 mm	L2 mm	Z1 mm	Z2 mm	A mm	B mm	D mm			
189102015TR	15 x 1/2"	52	32	32	18,5	40	13	6	173	10	100
189102018TR	18 x 1/2"	52,5	32	32,5	18,5	40	13	6	182	10	50
189102022TR	22 x 1/2"	53,5	35	32,5	21,5	40	15	6	206	5	50